



Upton Lodge Farm Wheatgrass Hill Upton NG23 5TJ

Guide price £650,000 Freehold

Jonathan Fitzpatrick Village & Country Homes
64 Main Street Farnsfield NG22 8EF
01623 392676
mail@jfea.co.uk

JF

Jonathan Fitzpatrick
VILLAGE & COUNTRY HOMES

A beautifully presented and spacious 4 bedroom, 4 reception room period farmhouse enjoying a semi-rural setting with open fields to the rear, and over 2,800 square feet of versatile accommodation. The property combines original charm with practical modern living, featuring exposed brickwork, timber beams, solid wood flooring and spacious reception areas throughout. At the heart of the home is an impressive 35ft open-plan kitchen and breakfast room with range-style cooker, central island and direct access onto the pool terrace and gardens. Separate reception rooms include a formal dining room, elegant lounge with feature fireplace and a useful office/snug - plus utility and downstairs cloakroom.

To the first floor are four well-proportioned bedrooms, including a principal bedroom with en-suite shower room leading to a large dressing room or nursery bedroom. A beautifully appointed family bathroom completes the accommodation.

Outside, the property is approached via a large gated gravelled courtyard providing extensive parking alongside a double cart barn and covered storage area. The stunning rear gardens and heated swimming pool terrace enjoy pleasant views towards neighbouring fields, creating an attractive backdrop and a wonderful setting for summer entertaining.

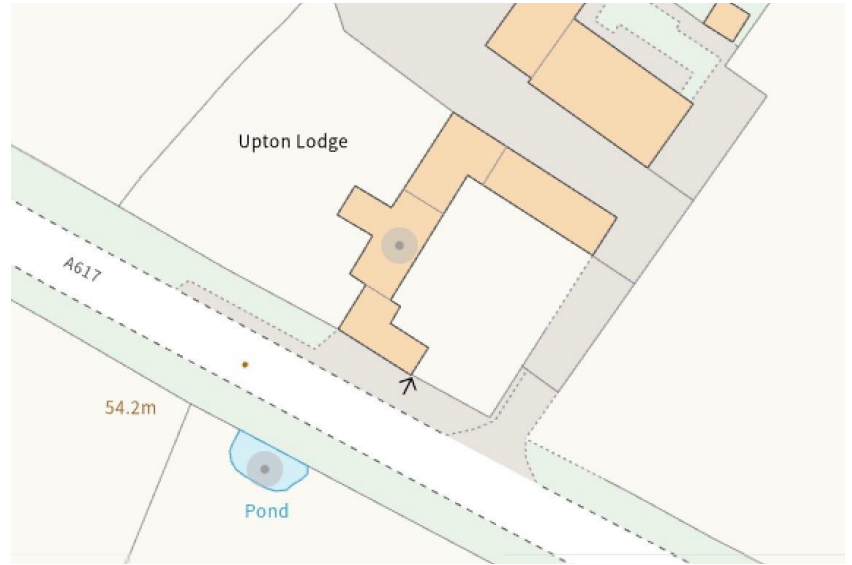
Occupying a highly accessible position on the edge of Upton village, the property offers convenient access to Newark, Southwell, the A1 and direct rail services to London King's Cross. No onward chain.











Freehold
Council tax band G
Oil central heating
Septic tank drainage
Flooding risk: Very low

Catchment for Minster School
Newark Northgate Train Station
to London King Cross -
approximately 6 miles

| | | |
|---|--|---------------------------|
| Upton Lodge Farm Upton NEWARK NG23 5TJ | | Energy rating F |
| Valid until 24 May 2036 | Certificate number 4200-7898-0022-2620-3563 | |

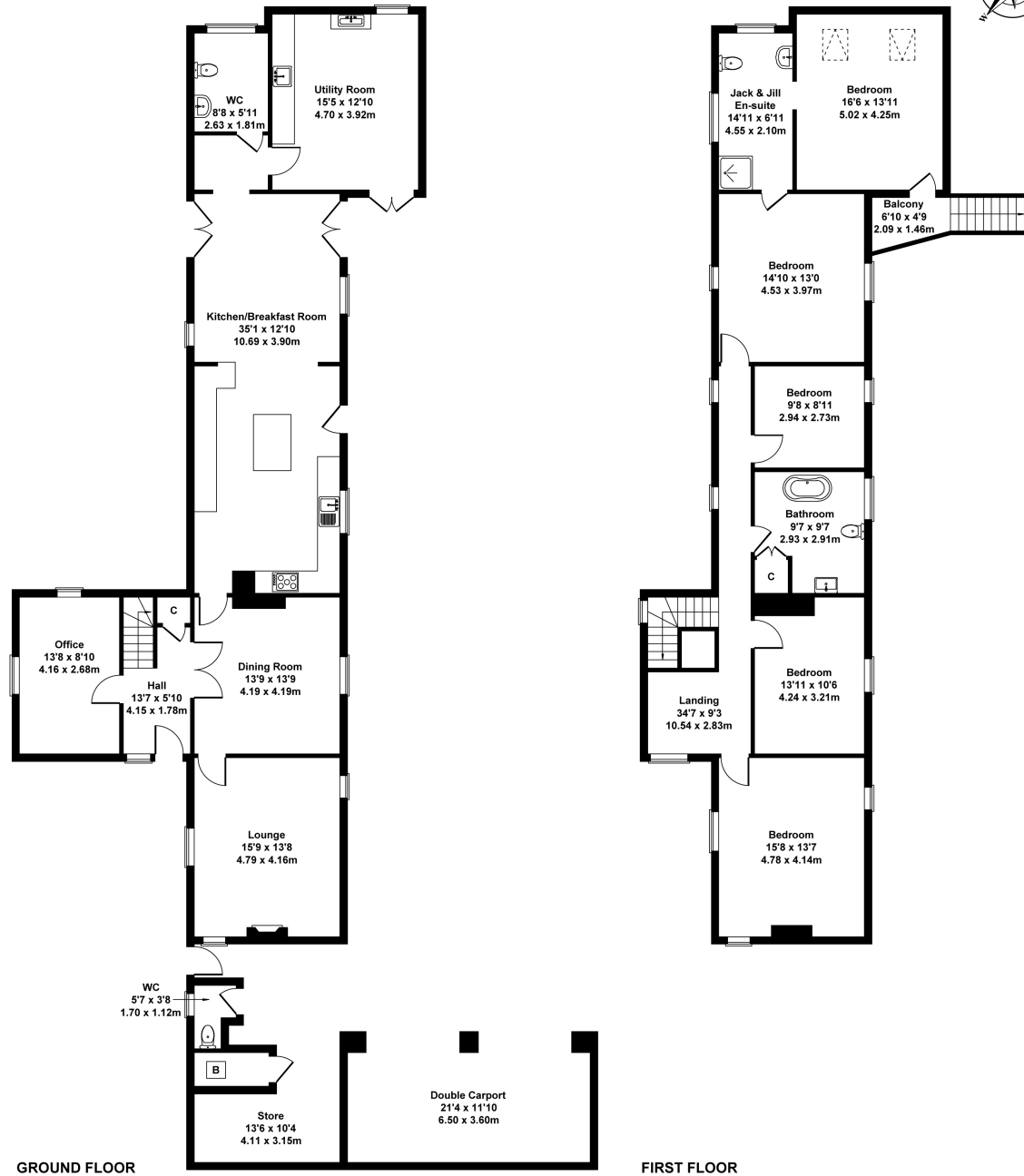
Main Office 01623 392676
Email mail@jfea.co.uk

64 Main Street Farnsfield NG22 8EF
**Viewing strictly by appointment through
Jonathan Fitzpatrick Village & Country Homes**



Upton Lodge Farm, Wheatgrass Hill, Upton, Newark, NG23 5TJ

Approximate Gross Internal Area
2809 sq ft - 261 sq m
(Excluding Double Carport)



Not to Scale. Produced by The Plan Portal 2026
For Illustrative Purposes Only.



JF

Jonathan Fitzpatrick
VILLAGE & COUNTRY HOMES

Agents Note: Whilst every care has been taken to prepare these sales particulars, they are for guidance purposes only. All measurements are approximate and for general guidance purposes only and whilst every care has been taken to ensure their accuracy, they should not be relied upon and potential buyers are advised to recheck the measurements